



White Box Expanded Lore

Additional Classes and Rules
for
White Box Fantastic Medieval Adventure Game

Table of Contents

Introduction.....	5	Bard.....	27
The Bard.....	6	Cleric.....	27
Bard abilities.....	6	Druid.....	27
The Druid.....	8	Fighter.....	28
Druid abilities.....	9	Magic-user.....	29
The Monk.....	11	Monk.....	29
Monk abilities.....	11	Paladin.....	29
The Paladin.....	13	Thief.....	29
Paladin abilities.....	13	Feats.....	30
Druid Spells List.....	15	General Feats.....	30
Air Walk.....	15	Bard Feats.....	30
Animal Messenger.....	16	Cleric Feats.....	31
Awaken Treant.....	16	Druid Feats.....	31
Berries.....	16	Fighter Feats.....	32
Call Lightning.....	17	Magic-User Feats.....	32
Charm Animal.....	17	Monk Feats.....	33
Control Water.....	17	Paladin Feats.....	33
Flare.....	18	Thief Feats.....	33
Fog.....	18		
Know Weather.....	18		
Locate Animal.....	19		
Locate Snares and Pits.....	19		
Move Earth.....	19		
Protective Circle.....	20		
Summon Animal.....	20		
Sunburst.....	20		
Tree Stride.....	21		
Warp Wood.....	21		
Wild Strength.....	22		
Wind Wall.....	22		
Expanded Rules.....	23		
Attributes.....	23		
Attribute Bonuses and Effects.....	23		
Bonus XP.....	24		
Checks.....	24		
Critical Hits and Failures.....	24		
Dual-Wielding.....	25		
Less Harsh Deaths.....	25		
Attribute Improvement.....	25		
Exotic Weapons.....	25		
Races.....	26		
Additional Abilities.....	27		

Author

Simon "Noobirus" Piecha



<https://www.facebook.com/noobirus/>

Art

GunarDAN

<http://gunardan.blogspot.com/>

Special Thanks To

Karol Ulatowski, Łukasz Kołodziej and Charlie Mason

Compatible with Swords & Wizardry: WhiteBox

Designed for

White Box by Charlie Mason

Version 1.1

"Swords & Wizardry, S&W, WhiteBox, and Mythmere Games are the trademarks of Matthew J. Finch," Simon Piecha and Jaskinia Noobirus is not affiliated with Matthew J. Finch or Mythmere Games™.

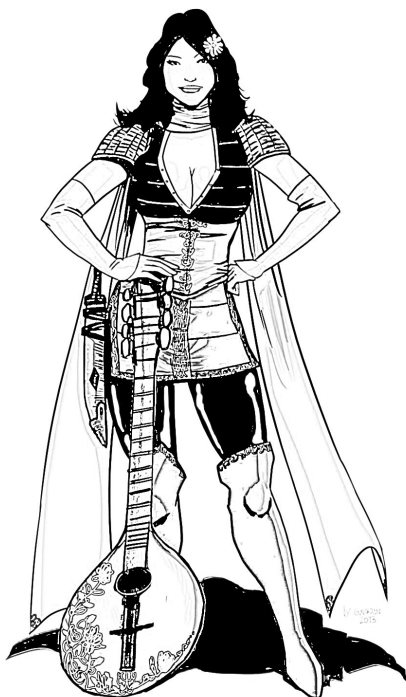
Introduction

Greetings traveler! The book you are currently reading is a compilation of four additional classes – the **Bard**, **Druid**, **Monk** and **Paladin** – and **house-rules**, that you can use in your **White Box** game.

It is worth mentioning, that the classes and rules presented here were designed specifically for the **White Box** game released by **Charlie Mason**. This means, they are balanced and simplified in order to work well with the original four classes – the **Fighter**, **Magic-User**, **Cleric** and **Thief**.

The additional rules however strongly modify the core rules of the **White Box** game and are designed for long campaigns. They are *very* optional and most purists may see them as too modern. Still, they are designed to keep the game simple, yet interesting (and, most importantly – fun).

I hope you will have fun reading this supplement, as much as I had writing it for my campaign.



The Bard

Minstrels, artists, poets... bards come in many names. You will meet them in most taverns, where they sing songs about mighty dragon slayers and mystical lands far beyond the known horizon.

Bards are pure-blooded adventurers and treasure hunters... or to be more precise - "adventure hunters". Bards are knowledgeable in many areas and are keepers of lore. They play a supportive role in the party - they may be not that strong in battle, but they are masters when it comes to solving puzzles, revealing secrets or bartering with non-player characters.

Bard Advancement					
Level	Exp. Points	Hit Dice	To Hit	Saving Throw	Lore
1	0	1	+0	14	2
2	1,250	1+1	+0	13	2
3	2,500	2	+0	12	2
4	5,000	2+1	+1	11	3
5	10,000	3	+1	10	3
6	20,000	3+1	+1	9	3
7	40,000	4	+2	8	4
8	80,000	4+1	+2	7	4
9	160,000	5	+2	6	4
10	320,000	5+1	+3	5	5

Bard abilities

Weapons and Armor Restrictions

Bards are not very skilled in battle. They cannot use heavy, two-handed weaponry (this also includes heavy ranged weapons) and may only wear leather armor.

Charm

Every bard has a musical instrument, describe yours to your Referee. At any time, you may play a magical song, that charms monsters with HD lower or equal to your level. You may also divide this effect among multiple weaker monsters (for example: a level 5 bard may charm five HD 1 monsters). As long as you play your instrument, the charmed monsters will follow you and won't do any harm. If you get distracted, hit or the monsters are attacked – the charm is broken and the song won't work again.

You can't charm undead, demons and monsters that can't hear.

Lore

Bards have a deep knowledge of many things – legends, magic and creatures. Whenever the bard finds something strange – an unidentified magical item or unknown site for example – the Referee rolls a d6. If the result of the roll is equal to or lower than the bard's rating in the lore ability, the Referee reveals useful information about the object or site. Otherwise, the Referee tells the bard a lie.

Saving Throw

Bards receive a +2 bonus on saving throws vs. charms (for example, those done by dryads).

Legend

A bard of ninth or higher level may write a book, that tells legends about the heroic deeds of the party. These legends are now known thorough the land, and the party receives great fame – they are recognized in every town in the world.

Experience Bonus for Charisma

Charisma is the Prime Attribute for Bards, which means that a Charisma score of 15+ grants an additional 5% experience.

The Druid

In contrast to the Cleric or Magic-User, Druids do not take their power from the gods or mystical scriptures. Druids worship nature and the natural order of things.

Druidic magic comes from mother nature – the elements, plants and animals. They have their own spell list. Druids are always neutral and tend to avoid civilized areas.

Druids have less spells than the Magic-User and aren't trained in warfare as the Cleric, but their special abilities allow them to survive in the wilderness and dungeons.

Druid Advancement				
Level	Exp. Points	Hit Dice	To Hit	Saving Throw
1	0	1	+0	15
2	2,500	1+1	+0	14
3	5,000	2	+0	13
4	10,000	2+1	+1	12
5	20,000	3	+1	11
6	40,000	3+1	+1	10
7	80,000	4	+2	9
8	160,000	4+1	+2	8
9	320,000	5	+2	7
10	640,000	5+1	+3	6

Druid Level	Spells					
	1	2	3	4	5	6
1	-	-	-	-	-	-
2	1	-	-	-	-	-
3	2	1	-	-	-	-
4	2	2	-	-	-	-
5	2	2	1	-	-	-
6	3	2	2	-	-	-
7	3	3	2	1	-	-
8	3	3	2	2	-	-
9	3	3	3	2	1	-
10	3	3	3	3	2	1

Druid abilities

Weapons and Armor Restrictions

Druids may use daggers and any wooden weapon. They may only wear leather armor.

Spell Casting

Druids cast druidic spells from a specific spell list, as per the Druid Advancement table. Each day, the Druid meditates for a certain set of spells, choosing any spell from the standard list.

Shape Change

Once per day, the druid may change his shape to either a small animal, or a bigger, more ferocious one. The druid may change back to his normal form at any time. While creating your character, consult with your Referee which small animal (for example: lizard, raven) and which big animal (for example: bear, wolf) you may change into.

In your small animal form, you cannot speak, you lose all equipment, cannot use any items and fight, but you are more agile and you may reach places inaccessible to normal humanoids.

In your big animal form, you cannot speak, you lose all equipment and cannot use any items but you deal 1d6+1 damage with your “natural weaponry” and your AC improves by -4 [+4].

Druids cannot cast spells while in their animal shape, since they cannot speak and have no hands.

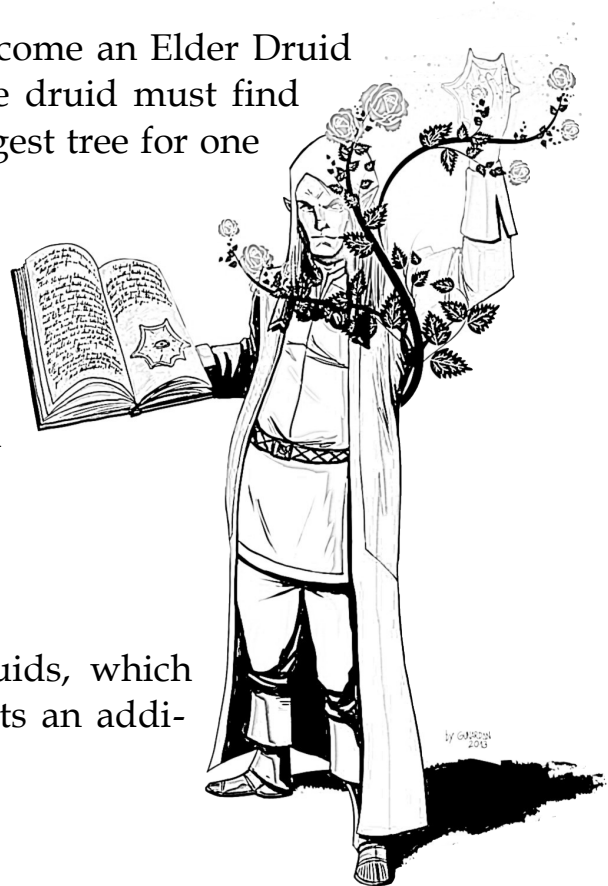
Saving Throw

Druids receive a +2 bonus on saving throws vs. element-based effects and attacks.

Sacred Grove

A druid of ninth or higher level may become an Elder Druid and the guardian of a sacred grove. The druid must find such a grove and meditate under the largest tree for one day in order to archive this status.

After becoming a guardian, the grove attracts many fantastic creatures, that are friendly to the druid and will help him protect the nearby land. Such creatures include – elves, faeries, dryads and treants.



Experience Bonus for Wisdom

Wisdom is the Prime Attribute for Druids, which means that a Wisdom score of 15+ grants an additional 5% experience.

The Monk

Monks are martial artists that strive for bodily and spiritual perfection. They prefer to fight unarmed and unarmored and value speed over brute strength.

Monks usually travel the land in search of worthy opponents. Every monk has trained in a monastery, that has it's own rules, philosophies and techniques. The monk may not be as tough as the fighter, but he is less encumbered and may solve some problems faster.

Monk Advancement				
Level	Exp. Points	Hit Dice	To Hit	Saving Throw
1	0	1	+0	14
2	2,000	1+1	+0	13
3	4,000	2	+1	12
4	8,000	2+1	+1	11
5	16,000	3	+2	10
6	32,000	3+1	+2	9
7	64,000	4	+3	8
8	128,000	4+1	+3	7
9	256,000	5	+4	6
10	512,000	5+1	+5	5

Monk abilities

Weapons and Armor Restrictions

Monks may use any weapon, although they prefer to fight unarmed or use exotic weaponry. Monks cannot wear any armor.

Flurry of Blows

Monks deal 1d6 damage while fighting unarmed. Furthermore, they may perform two attacks per round while fighting bare-handed.

Acrobatics

Monks may fall great distances without sustaining any damage. Furthermore, the Monk may climb (or run up) vertical walls with ease.

Saving Throw - Dodging

Monks may use Saving Throws to dodge missiles.

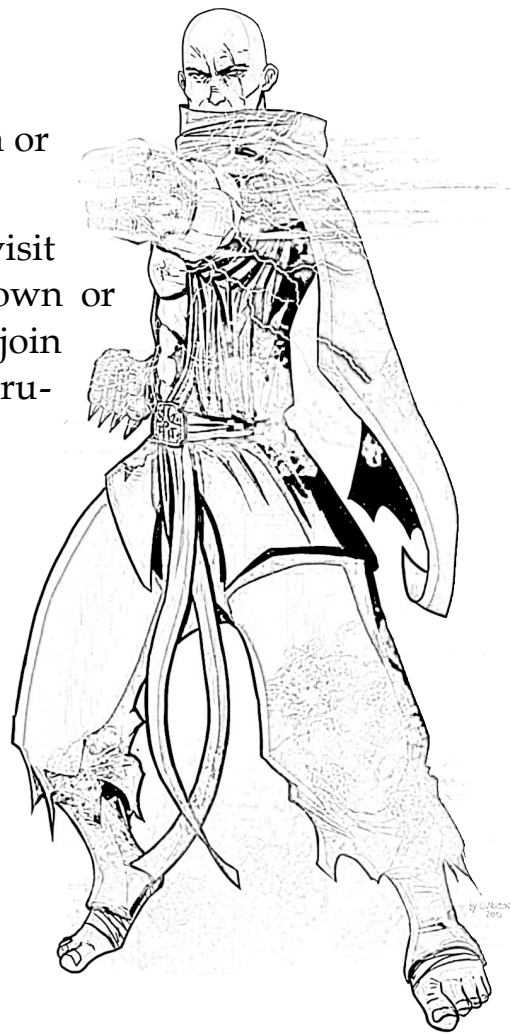
Master

A ninth or higher level Monk may call him or herself a Master and train others.

At this level, other traveling adepts may visit the monk whenever he is staying at a town or other civilized areas. Some adepts may join the monk, others may share wisdom and rumors.

Experience Bonus for Wisdom

Wisdom is the Prime Attribute for Monks, which means that a Wisdom score of 15+ grants an additional 5% experience.



The Paladin

Paladins are holy, ascetic knights of law and virtue. Fighters may fight for the sake of it, Paladins on the other hand, follow a strict code – every sword strike has a meaning and consequence. Paladins are mystical warriors, that are the bane to all tyranny and evil. A lot of Paladins also serve a lawful god.

Paladins must always be lawful, although evil Anti-Paladins (or Black Knights) do exist and may be chosen if the Referee agrees.

Paladin Advancement				
Level	Exp. Points	Hit Dice	To Hit	Saving Throw
1	0	1	+0	13
2	2,500	2	+0	12
3	5,000	3	+1	11
4	10,000	4	+2	10
5	20,000	5	+3	9
6	40,000	6	+3	8
7	80,000	7	+4	7
8	160,000	8	+4	6
9	320,000	9	+5	5
10	640,000	10	+6	4

Paladin abilities

Weapons and Armor Restrictions

Paladins are well-trained knights, thus they may use any weapon and wear any armor.

Vows

Paladins must always be lawful. They must also keep enough wealth to maintain themselves (and, at higher levels, their men). Any excess wealth is donated to charitable or religious institutions.

As long as the Paladin maintains his vows, he is immune to fear and magic that could affect his mind.

Lay on Hands / Smite

Once per day, the Paladin may concentrate divine energy, touch an ally and restore him or her 2 HP per Paladin level. If the Paladin touches an evil or chaotic being, he or she loses that much HP instead.

Saving Throw

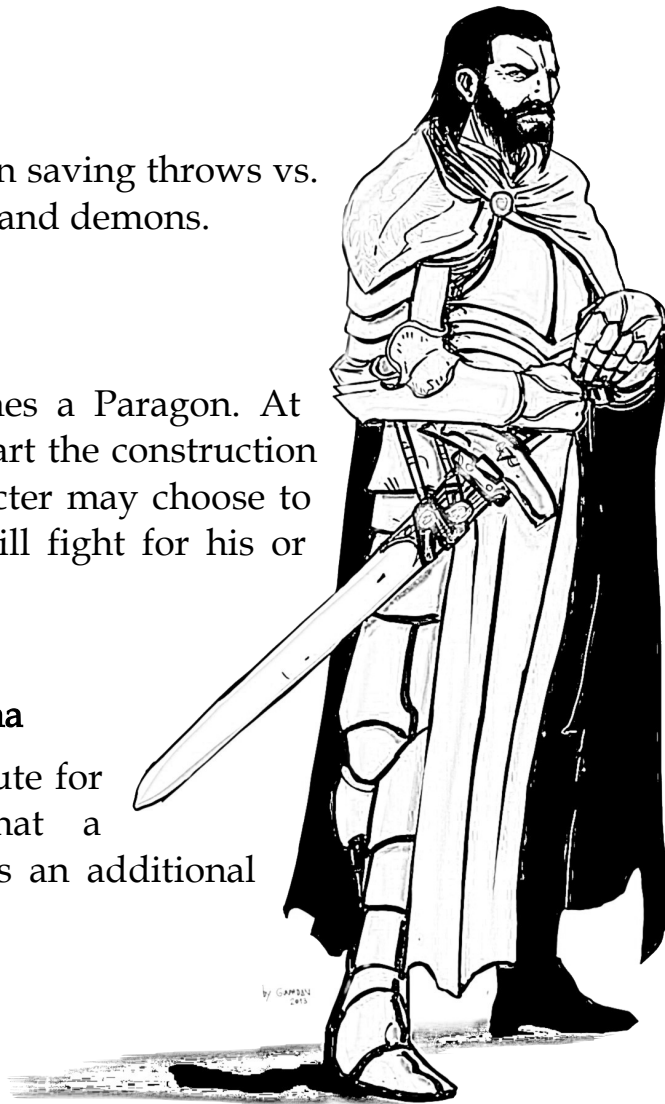
Paladins receive a +2 bonus on saving throws vs. any effects caused by undead and demons.

Paragon

A tenth level Paladin becomes a Paragon. At this level, the Paladin may start the construction of his own palace. The character may choose to attract other knights, who will fight for his or her cause.

Experience Bonus for Charisma

Charisma is the Prime Attribute for Paladins, which means that a Charisma score of 15+ grants an additional 5% experience.



Druid Spells List

Druid Spells	
Level 1	Level 2
Berries	Animal Messenger
Charm Animal	Fog
Flare	Warp Wood
Know Weather	Wild Strength
Locate Animals	
Locate Snares and Pits	
Level 3	Level 4
Call Lightning	Air Walk
Protective Circle	Control Water
Summon Animal	Tree Stride
Wind Wall	
Level 5	Level 6
Awaken Treant	???
Move Earth	
Sunburst	

Note: if you are not using the Expanded Rules presented in this book, it would be wise to add the "Speak with Animals" and "Speak with Plants" spell to the Druid spell list.

Air Walk

Spell Level: D4

Range: Caster

Duration: 30 minutes

The Druid may walk on air, as if it was solid ground. Strong winds may break the spell.

Animal Messenger

Spell Level: D2

Range: None

Duration: Until message is delivered

The Druid summons a tiny animal in his hand (for example: bird, rat), that will try to reach it's recipient. The Druid may attach a scroll with a message to the animal. If the messenger reaches its recipient – it disappears.

Awaken Treant

Spell Level: D5

Range: Touch

Duration: Until destroyed

This spell transforms a touched tree into a friendly treant. Its HD depends on the size of the tree.

Berries

Spell Level: D1

Range: None

Duration: Until eaten

The Druid creates 1d6 magical berries in his hand. Each berry restores 1 HP when eaten.

Call Lightning

Spell Level: D3

Range: 240 ft.

Duration: Instantaneous

A lightning bolt strikes down on the chosen target and deals 1d6 damage per caster level. It deals an additional 1d6 when used outdoors and another 1d6 if the target wears metal objects.

Charm Animal

Spell Level: D1

Range: 120 ft.

Duration: Until dispelled

This spell operates in the same manner as the Charm Person spell of the Magic-User, but affects animals.

Control Water

Spell Level: D4

Range: 10 feet per caster level

Duration: 10 minutes per caster level

This spell allows the Druid to raise, lower and move bodies of water in his near vicinity (10 feet per caster level). He may also split the water to create passageways or make it flow around certain areas.

Flare

Spell Level: D1

Range: 25 ft.

Duration: Instantaneous

This spell shoots out a small, magical flare out of the Druids finger. The flare may daze an enemy for 1d6 rounds (Saving Throw possible). It does not work on monsters that do not have eyes or cannot see.

Fog

Spell Level: D2

Range: 250 ft.

Duration: Until dispelled

This spell creates a thick, magical fog in the area. Every creature, except the Druid, can barely see in this fog and receives a -4 To-Hit penalty while trying to fight in these conditions.

Know Weather

Spell Level: D1

Range: 2 miles per caster level

Duration: Instantaneous

This spell allows the Druid to forecast the weather in the current location. The forecast is for the next 12 hours.

Locate Animal

Spell Level: D1

Range: 90 ft.

Duration: 1 minutes per level

Works in the same manner as the Locate Object spell, but affects animals.

Locate Snares and Pits

Spell Level: D1

Range: 90 ft.

Duration: 1 minutes per level

Works in the same manner as the Locate Object spell, but affects snares and pits.

Move Earth

Spell Level: D5

Range: 600 ft.

Duration: Instantaneous

This powerful spell allows the Druid to magically move massive amounts of stone and earth and dig holes. The Druid may for example create small hills or underground passageways.

Protective Circle

Spell Level: D3

Range: 20 ft.

Duration: 2 minutes per caster level

This spell creates a stationary magical circle around the druid, that completely blocks fire, lightning, water and ice.

Summon Animal

Spell Level: D3

Range: 90 ft.

Duration: 1 day

This spell calls forth an animal ally with 4 HD. The Druid may also instead divide the HD into smaller creatures (for example: he may summon four animals with 1 HD). All summoned animals disappear at the end of the day.

Sunburst

Spell Level: D5

Range: 300 ft.

Duration: Instantaneous

This spell creates an explosive globe (80 ft.) of light. All creatures within the globe become blinded and take 1d6 points of damage per caster level.

Tree Stride

Spell Level: D4

Range: Caster

Duration: 1 hour per caster level

This spell allows the Druid to merge (hide inside) with a tree. After merging, the Druid can freely “teleport” into another nearby tree of the same type.

The Druid must leave the tree if the spell duration ends, or the tree is chopped down or burned.

Warp Wood

Spell Level: D2

Range: 30 ft.

Duration: Permanently

This spell causes wood to bend and warp, permanently destroying its straightness, form, and strength. A warped door springs open (or becomes stuck, requiring a Strength check to open, at your option). A boat or ship springs a leak. Warped ranged weapons are useless. Alternatively, you can unwarp wood (effectively warping it back to normal) with this spell, straightening wood that has been warped by this spell or by other means.

Wild Strength

Spell Level: D2

Range: Caster or Touch

Duration: 1 hour per caster level

This spell gives a chosen person immense strength – his muscle mass rips apart clothes after casting. The character also receives a +2 bonus to all melee damage done and can easily bend bars and lift heavy objects.

Wind Wall

Spell Level: D3

Range: 100 ft.

Duration: 1 round per caster level

This spell creates an invisible curtain of air, that deflects all projectiles, gases and smaller creatures (HD 1/2). Creatures with a HD of 1 may still try to breach the wall, but must make a Saving Throw in order to do so.

Expanded Rules

This chapter presents rules, that I personally use in my campaign. As you may notice, they change a lot in the original **White Box** engine – thanks to these house rules, characters are much stronger and players have more options to choose from while creating their characters.

These rules are designed for long campaigns and for players who like to tinker with game mechanics.

Attributes

Attributes are handled differently in my game. While creating their characters, players roll **seven** times 3d6 and drop the lowest score. After that, they may arrange the rolls however they want.

Attribute Bonuses and Effects

In these rules, Attributes scores may give high bonuses to the character.

Attribute Bonus	
Attribute Roll	Bonus
3	-3
4-5	-2
6-8	-1
9-11	0
12-14	+1
15-16	+2
17-18	+3
19+	+4

Strength: characters use their Strength Bonus to modify their “to-hit” and damage results when using melee weapons.

Dexterity: characters use their Dexterity Bonus to modify their “to-hit” and damage results when using ranged weapons.

Constitution: characters add their Constitution Bonus when rolling their Hit Die.

Intelligence: Magic-Users can use their Intelligence Bonus to improve “spell effectiveness” (i.e. target suffers a loss on his saving throw). Every “+” in the Intelligence Bonus also allows the character to learn an additional language. Characters with low intelligence cannot solve puzzles.

Wisdom: Clerics can use their Wisdom Bonus to improve “spell effectiveness” (i.e. target suffers a loss on his saving throw). Every “+” also gives the character a +5% bonus to all XP gained, and every “-” gives a -5% penalty to all XP gained.

Charisma: each character in the game may hire up to three specialists, this number is modified by the Charisma Bonus. The Charisma Bonus also modifies Loyalty, Morale and Reaction rolls.

Bonus XP

If you wish to use the rules that are written here, ignore all the Experience Bonus abilities of all classes - Characters do not receive Bonus XP for having high Attribute Scores (so, the Fighter does not receive bonus XP for having high Strength). Bonus XP is covered by the Wisdom attribute, there are no Prime Attributes.

Checks

While traveling in dungeons or in the wilderness, characters may perform various actions, this includes: **Listening, Finding Secret Doors, Finding Traps** and **Unlocking Doors**. Whenever a character performs one of these actions, the Referee secretly rolls a d6. A result of **1-2** means success, anything above is failure. Some racial abilities and feats may modify these rolls.

Critical Hits and Failures

Rolling a 20 on a Attack Roll results in a Critical Hit – the character deals maximum damage to his foe. Rolling a 1 means a Critical Failure – the character deals no damage and drops his weapon in the process.

Dual-Wielding

Characters may wield two weapons at once. Dual-Wielding is simply the opposite of fighting with a weapon + shield. Instead of gaining AC, the character gets a +1 To-Hit Bonus. All attacks are still made with the weapon in the main hand.

Less Harsh Deaths

Characters die when they reach negative Hit Points equal to their level. When an character's HP reaches 0, he or she is unconscious and loses 1 HP per combat round. After that, the party may try to stop the bleeding.

Attribute Improvement

Upon reaching level two, four, six and eight, characters may choose two different attributes and increase them by one. Remember to recalculate Hit Points, if the Constitution Bonus of a character has increased.

Exotic Weapons

Characters may find exotic weaponry on their journeys. Exotic weapons are basically more expensive (gp cost x3) and complicated versions of the “traditional” White Box weapons. Below is a short list of exotic weapons you may find. It works like this: whenever a character finds a weapon, there is a 25% chance, that this weapon will be exotic instead (for example: if you would find a staff, there is a 25% chance you will get a nunchaku instead).

Nunchaku (Staff) – two sticks connected with a chain. It's hard to use, so only monks may wield it, they also receive 5% more XP whenever they defeat an enemy with a nunchaku.

Meteor Hammer (Warhammer) – two heavy iron balls connected with a chain. Monks deal additional +1 damage with this weapon. Requires two hands to use.

Butterfly Sword (Sword, short) – the butterfly sword has a small crossguard to protect the hands of the wielder. Monks improve their AC by -1 [+1] if they dual wield these.

Races

Races in my campaign work differently. Players may choose any race and class combination, as long as it makes sense. Each race has it's own special abilities:

- ◆ **Human:** humans are quick to learn, they may choose a feat during character creation.
- ◆ **Dwarf:** dwarfs are tough and sturdy, their Hit Dice is a d8 instead of a d6. Dwarfs also receive a +1 To-Hit Bonus when fighting goblins, orcs and trolls.
- ◆ **Elf:** elves are immune to paralysis (for example, caused by ghouls). Elves can also **Listen** and **Find Secret Doors** more easily, their range of success is increased by 2 (1-4 instead of 1-2).
- ◆ **Halfling:** halflings are small, thus big monsters (ogres, trolls, giants...) can barely hit them – they deal only half of their damage (rounded down). Halflings also move completely silently when on grass.
- ◆ **Gnome:** gnomes can always recognize illusions. They can also communicate with burrowing animals.
- ◆ **Half-Orc:** half-orcs get a +1 damage bonus to all attacks they perform (even ranged). They also can **Unlock Doors** (by using pure Strength) more easily, their range of success is increased by 2 (1-4 instead of 1-2).



Additional Abilities

Each character class in my game has an additional ability, some of them give options during character creation.

Bard

Bardic Spell

Bards have some understanding of mystical scriptures. During character creation, choose one first-level spell from the Magic-User list. You may cast that spell once per day.

Cleric

God Weapon

Every god has it's preferred weapon. During character creation, the cleric should describe which weapon is used by his or her god (warhammer, long swords etc.).

The cleric has proficiency in his chosen weapon. Furthermore, he receives a +1 To-Hit and Damage bonus when using it.

Druid

Animal Tongue

Druids may naturally speak with any animal. Not all of them must be friendly or helpful though.

Fighter

Sub-classes

The fighter may choose one subclass, which represents his fighting style or origin.

- ◆ **Anti-mage:** anti-mages are immune to magic, but can't use magic items and drink potions.
- ◆ **Archer/Crossbowman/Slinger:** during a ranged attack, the fighter may simply attack with a +1 To-Hit Bonus **or** he may try to attack a vital spot and deal additional 1d4 points of damage to the enemy.
- ◆ **Berserker:** before every fight, the berserker may go frenzy and reduce his Armor Class by +4 [-4] during the battle. While in frenzy, the berserker may perform an additional attack every round.
- ◆ **Cavalier:** cavaliers get a +1 To-Hit Bonus and improve their Armor Class by -1 [+1] when they fight on a mount.
- ◆ **Noble:** whenever a nearby character would receive damage from an enemy, the noble may redirect all that damage to him or herself.
- ◆ **Slayer:** choose a monster type (Dragon Slayer, Troll Slayer, Vampire Slayer...). The slayer gets a +2 To-Hit Bonus whenever he fights against his chosen foe. Furthermore, slayers may easily spot tracks of their chosen foes, they always know when they are nearby.
- ◆ **Soldier:** soldiers improve their AC by -1 [+1] when using a shield. They also are harder to kill – their negative number of Hit Points must be double their level in order to die (so a level 3 soldier dies if he reaches -6 HP).
- ◆ **Swordsman:** swordsmen receive a +1 To-Hit and Damage Bonus when fighting with a blade, they also add their Dexterity Bonus to their Armor Class. Swordsmen cannot wear any armor heavier than leather.

Magic-user

Familiar

Wizards may have their own familiar. Familiars are small (1 HD, AC 8 [11]), magical creatures that support the magician. During character creation, describe your familiar (is it a cat? Owl? Raven?) and give him a name.

The Magic-User has a telepathic connection with his familiar. The familiar can also speak all languages known to the Magic-User and knows one first level spell (he or she may cast it once per day).

If the familiar dies, the Magic-User decreases his or her Intelligence score by 1. The familiar may be re-summoned after a week.

Monk

Meditation

Once per day, the monk may go into a deep meditative state for one hour. After that, the monk restores 1d6 Hit Points and his body is purified from poison.

Paladin

Paladin Mount

While in the wilderness, the paladin may whistle and call his steed (HD 4) to aid him. During character creation, the player should describe his mount and name it.

If the steed dies, the Paladin decreases his or her Charisma by 1 and must wait one year until he or she finds a new steed.

Thief

Precision

When using daggers, the Thief may use his Dexterity Bonus instead of his Strength bonus when calculating damage and To-Hit bonuses.

Feats

On the third, fifth, seventh and ninth level the player may choose one special feat for his character. He or she may choose a **General Feat** or one from their class list.

General Feats

1. **Careful** – **Listening**, **Finding Secret Doors** and **Finding Traps** range of success is increased by 2.
2. **Gifted** – increase one chosen Attribute by 2.
3. **Leadership** - +2 to maximum specialists you can hire.
4. **Linguistics** – you learn a new language.
5. **Quick Learner** – +10% XP bonus.
6. **Tough** – +1 to all damage dealt and **Unlocking Doors** range of success is increased by 2.

Bard Feats

1. **Charming** – while trying to charm creatures, you are treated as a bard of one level higher.
2. **Golden Tongue** – you learn a new language, you may also choose obscure languages, like draconic, demonic, ancient...
3. **Light Step** – you activate traps only when the Referee rolls 1 on a d6.
4. **Simple Counter-spells** - +2 to Saving Throws vs. Magic.
5. **Swashbuckler** - +1 to damage when fighting with light blades.
6. **Wise** – increase your Lore by 1.

Cleric Feats

1. **Conversion** – you may forget any prepared spell and cast cure/cause light wounds instead. Add +x to your roll, where “x” is the level of the spell you used.
2. **Fearless** – you are immune to fear.
3. **Holy Aura** – all damage you receive is reduced by 2.
4. **Spell Specialization** – choose one spell up to level three from your list that you know. You may cast that spell once per day for free.
5. **Stronger Turning** – while turning undead, you are treated as a cleric of one level higher.
6. **Talent** – you can prepare one extra first level spell.

Druid Feats

1. **Beast** – +1 to damage and while in your big animal form.
2. **Body Alchemy** – +2 to Saving Throws vs. poisons and diseases.
3. **Natural Armor** – your AC is improved by -1 [+1] when standing in tall grass or water.
4. **Spell Specialization** – choose one spell up to level three from your list that you know. You may cast that spell once per day for free.
5. **Staff Fighter** – +1 to damage and To-Hit when fighting with a staff.
6. **Talent** – you can prepare one extra first level spell.

Fighter Feats

1. **Cleave** – you may perform another attack after killing an enemy.
2. **Dodge** – AC increased by -1 [+1].
3. **Eagle Eye** – you always choose the target when firing a ranged weapon into melee.
4. **Iron Will** – +2 to all Saving Throws.
5. **Persistence** – Hit Points increased by 3.
6. **Weapon Specialist** – choose a weapon type (swords, axes, hammers...). +1 To-Hit and Damage Bonus when using those.

Magic-User Feats

1. **Armored Caster** – you may wear leather armor.
2. **Battle Mage** – add your Intelligence modifier to damage dealt by your spells.
3. **Gesture Magic** – you don't need to speak while casting spells.
4. **Spell Specialization** – choose one spell up to level three from your list that you know. You may cast that spell once per day for free.
5. **Talent** – you can prepare one extra first level spell.
6. **Vocal Magic** – you don't need to move while casting spells.

Monk Feats

1. **Dodge** – AC increased by -1 [+1].
2. **Exotic Weaponry** – +1 to damage and To-Hit while fighting with exotic weapons (nunchaku, meteor hammers, butterfly swords).
3. **Iron Fists** – +1 to damage while fighting unarmed.
4. **Nirvana** – restore 1 extra Hit Point each day.
5. **Persistence** – Hit Points increased by 3.
6. **Slow Motion** – +2 to Saving Throws while trying to dodge missiles.

Paladin Feats

1. **Authority** – +2 to maximum specialists you can hire.
2. **Blessing** – you may cast the “Bless” spell twice per day.
3. **Cleave** – you may perform another attack after killing an enemy.
4. **Crusader** – +2 to damage against undead and demons.
5. **Holy Hand** – Lay on Hands restores 3 HP per level instead of 2.
6. **Inquisition** – you may cast the “Detect Chaos” spell twice per day.

Thief Feats

1. **Assassin** – add +4 to your To-Hit bonus instead +2 when you perform a Back Stab.
2. **Delver** – **Listening**, **Finding Secret Doors** and **Finding Traps** range of success is increased by 2.
3. **Light Step** – you activate traps only when the Referee rolls 1 on a d6.
4. **Risky** – you achieve Critical Hits on 19 and 20.
5. **Specialist** – increase your Thievery by 1.
6. **Uncanny Speed** – add +1 to your parties initiative roll.

The following text is the property of Wizards of the Coast, Inc. and is Copyright 2000 Wizards of the Coast, Inc ("Wizards"). All Rights Reserved.

1. Definitions: (a) "Contributors" means the copyright and/or trademark owners who have contributed Open Game Content; (b) "Derivative Material" means copyrighted material including derivative works and translations (including into other computer languages), potation, modification, correction, addition, extension, upgrade, improvement, compilation, abridgment or other form in which an existing work may be recast, transformed or adapted; (c) "Distribute" means to reproduce, license, rent, lease, sell, broadcast, publicly display, transmit or otherwise distribute; (d) "Open Game Content" means the game mechanic and includes the methods, procedures, processes and routines to the extent such content does not embody the Product Identity and is an enhancement over the prior art and any additional content clearly identified as Open Game Content by the Contributor, and means any work covered by this License, including translations and derivative works under copyright law, but specifically excludes Product Identity. (e) "Product Identity" means product and product line names, logos and identifying marks including trade dress; artifacts; creatures characters; stories, storylines, plots, thematic elements, dialogue, incidents, language, artwork, symbols, designs, depictions, likenesses, formats, poses, concepts, themes and graphic, photographic and other visual or audio representations; names and descriptions of characters, spells, enchantments, personalities, teams, personas, likenesses and special abilities; places, locations, environments, creatures, equipment, magical or supernatural abilities or effects, logos, symbols, or graphic designs; and any other trademark or registered trademark clearly identified as Product identity by the owner of the Product Identity, and which specifically excludes the Open Game Content; (f) "Trademark" means the logos, names, mark, sign, motto, designs that are used by a Contributor to identify itself or its products or the associated products contributed to the Open Game License by the Contributor (g) "Use", "Used" or "Using" means to use, Distribute, copy, edit, format, modify, translate and otherwise create Derivative Material of Open Game Content. (h) "You" or "Your" means the licensee in terms of this agreement.

2. The License: This License applies to any Open Game Content that contains a notice indicating that the Open Game Content may only be Used under and in terms of this License. You must affix such a notice to any Open Game Content that you Use. No terms may be added to or subtracted from this License except as described by the License itself. No other terms or conditions may be applied to any Open Game Content distributed using this License.

3. Offer and Acceptance: By Using the Open Game Content You indicate Your acceptance of the terms of this License.

4. Grant and Consideration: In consideration for agreeing to use this License, the Contributors grant You a perpetual, worldwide, royalty-free, non-exclusive license with the exact terms of this License to Use, the Open Game Content.

5. Representation of Authority to Contribute: If You are contributing original material as Open Game Content, You represent that Your Contributions are Your original creation and/or You have sufficient rights to grant the rights conveyed by this License.

6. Notice of License Copyright: You must update the COPYRIGHT NOTICE portion of this License to include the exact text of the COPYRIGHT NOTICE of any Open Game Content You are copying, modifying or distributing, and You must add the title, the copyright date, and the copyright holder's name to the COPYRIGHT NOTICE of any original Open Game Content you Distribute.

7. Use of Product Identity: You agree not to Use any Product Identity, including as an indication as to compatibility, except as expressly licensed in another, independent Agreement with the owner of each element of that Product Identity. You agree not to indicate compatibility or co-adaptability with any Trademark or Registered Trademark in conjunction with a work containing Open Game Content except as expressly licensed in another, independent Agreement with the owner of such Trademark or Registered Trademark. The use of any Product Identity in Open Game Content does not constitute a challenge to the ownership of that Product Identity. The owner of any Product Identity used in Open Game Content shall retain all rights, title and interest in and to that Product Identity.

8. Identification: If you distribute Open Game Content You must clearly indicate which portions of the work that you are distributing are Open Game Content.

9. Updating the License: Wizards or its designated Agents may publish updated versions of this License. You may use any authorized version of this License to copy, modify and distribute any Open Game Content originally distributed under any version of this License.

10 Copy of this License: You MUST include a copy of this License with every copy of the Open Game Content You Distribute.

11. Use of Contributor Credits: You may not market or advertise the Open Game Content using the name of any Contributor unless You have written permission from the Contributor to do so.

12 Inability to Comply: If it is impossible for You to comply with any of the terms of this License with respect to some or all of the Open Game Content due to statute, judicial order, or governmental regulation then You may not Use any Open Game Material so affected.

13 Termination: This License will terminate automatically if You fail to comply with all terms herein and fail to cure such breach within 30 days of becoming aware of the breach. All sublicenses shall survive the termination of this License.

14 Reformation: If any provision of this License is held to be unenforceable, such provision shall be reformed only to the extent necessary to make it enforceable.

15 COPYRIGHT NOTICE

Open Game License v 1.0 Copyright 2000, Wizards of the Coast, Inc.